



# CARTRIDGE TANK<sup>®</sup> FILTRATION SYSTEM



Say goodbye to small and inefficient housings. Get rid of expensive stainless steel housings. The ENPRESS **Cartridge Tank<sup>®</sup>** is a direct replacement for small and inefficient 2½" or 4½" housings, or expensive Stainless Steel cartridge housings, and offers extended service and life, and a more cost-effective and efficient filtration solution.

Utilizing ENPRESS' patented industry exclusive liner design and no tools necessary snap-ring design; Full radial seal top and bottom caps make replacement simple. **Cartridge Tank<sup>®</sup>** makes it easy to access and remove the internal filtration solution.

Lightweight and cost effective with multiple configuration options, from high flow commercial/industrial applications to stand-alone residential Point-of-Entry (POE) installations for city and well water applications, this is the filtration solution of the future...100% non-metallic! The **Cartridge Tank<sup>®</sup>** is a high performance, NSF 44 listed device and has been tested to 150 psi operating pressure with 4:1 Burst Safety Factor.

## Features

- 100% non-metallic!
- Patented no-tools necessary snap-ring design
- Multiple filtration solutions **OR GR YE BL WH RE PU**
- Full 1¼" and 2" plumbing connection options
- Large capacity filter configurations

## Benefits

- Lightweight and cost effective housing with high chemical compatibility
- Simple and easy change-out of cartridges. No Tools, Means NO TOOLS!
- Match the filtration solution with flow rate requirements
- Extended service life, contaminant removal, and dirt holding capacity
- Low pressure drop = high flow

## Applications

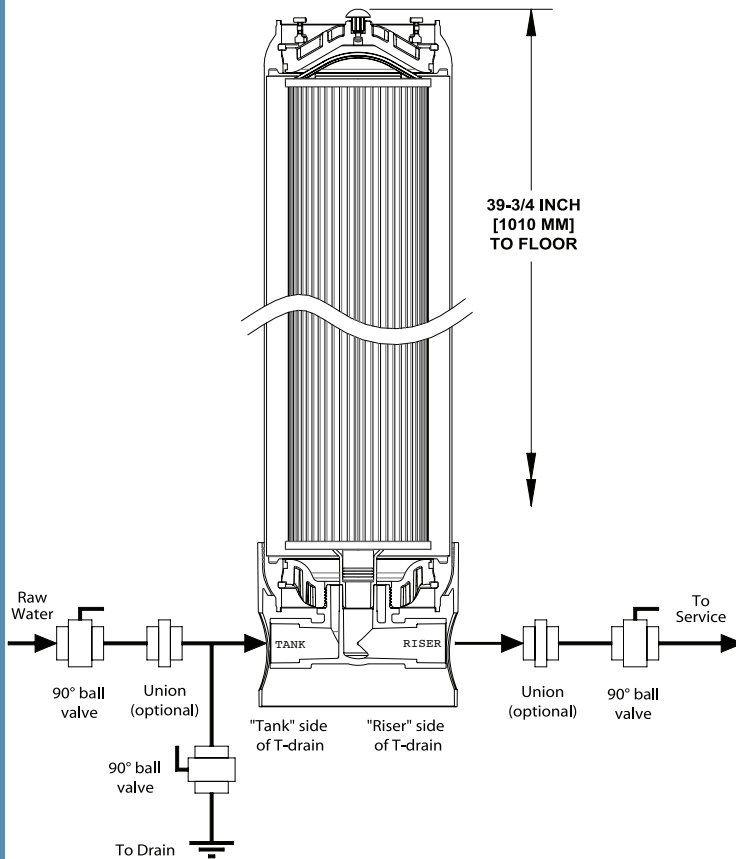
- Ideal for Residential, Food Service, Rental Fleets, Commercial and Industrial Applications
- Make-up Water, RO Pre-filtration, Cooling Towers, Chill Water Loops, Metal Finishing
- Process Water (turbidity, particulate, colloidal suspensions)
- Reduction of unwanted bad taste and odor from potable drinking water
- City water applications where water softeners are a hard sell...as a replacement option of pitcher, faucet, bottled water and/or refrigerator filters
- Reduction in frequency of replacing common 2½" or 4½" housings...Bigger is Better
- Other water-based fluid solutions

Available in 5 standard colors.  
Custom colors available upon request.





## Technical Schematics



### Recommended:

Drain installed on inlet side of system, for removal of contaminants in sediment applications.

Drain installed on outlet side of system, for flushing of new cartridges that have dust (i.e. Blue Series)

## Available Options and Configurations

COLOR-CODED CARTRIDGE FILTRATION SERIES

OR GR YE BL WH RE PU

Item #: CT-1/4NPTLID



Top Cap option with pressure release Valve & Removal Handles

Item #: CT-2.5LID

Item #: CT-4.5LID



2.5" Threaded top/bottom Res./LC Cap threaded connection.



4.5" Threaded top/bottom Commercial Cap threaded connection.

Item #: CT-RETAININGRING



Snap Ring with I.D. Tag connection.

Item #: CT-2.5DRAIN  
CT-2.5ADAPTER

Item #: CT-4.5DRAIN  
CT-4.5ADAPTER



2.5" Bottom Drain Plumbing for Res./LC Filters.



4.5" Bottom Drain Plumbing for Commercial Filters.

## Easy Replacements - No Tools Means No Tools

PRESS THE RED PRESSURE RELIEF VALVE & PULL SNAP-RING



LIFT TOP CAP



US and International patents, and patent pending.



For more information, visit [enpress.com](http://enpress.com) or [oneFiltration.com](http://oneFiltration.com)



This pressure vessel is tested and certified by NSF International against NSF/ANSI Standard 44 and 61 for materials and structural integrity requirements

COMPONENT

ENPRESS, LLC. | 34899 Curtis Blvd., Eastlake Ohio 44095 | Phone 866.859.9274 | Fax 440.510.0202 | [info@enpress.com](mailto:info@enpress.com)

© ENPRESS LLC 2017

ONE® is an ENPRESS Filtration Technology

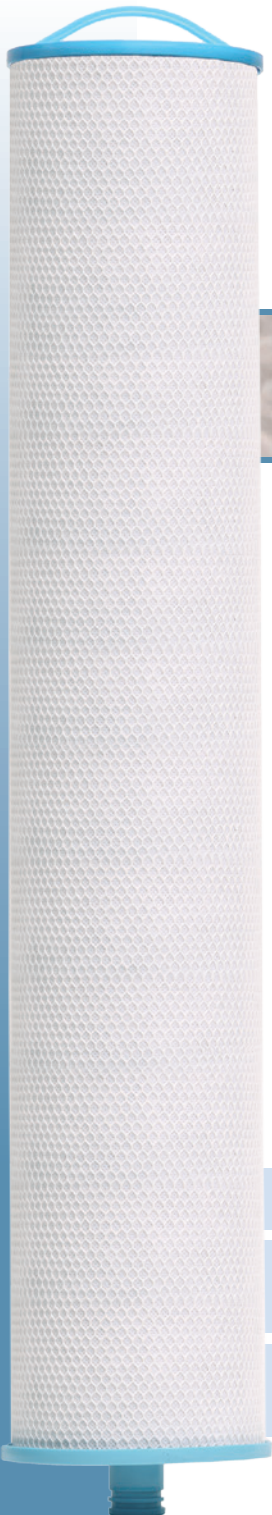
ELLC #02B - 07/2017



# CARTRIDGE TANK<sup>®</sup> FILTRATION SYSTEM

The Blue Filtration Series incorporates surface modified carbon block filter technology that is highly effective reducing bad taste, odor, and the reduction of chlorine and chloramines from potable drinking water. The filters are made using high performance coconut shell carbon, which has more micropores compared to other types of carbon.

Coupled with a unique binder system, these carbon block filters deliver a product with superior adsorption capacity and kinetic dynamics. The unique high capacity filters provide cost effective water filtration solutions in a size and configuration that offer ease-of-use, extended service life and high capacity, with a low pressure loss.



## Blue Filtration Series

The Chloramine Block is a proprietary media with an enormous number of catalytically active Nitrogen Groups for highly efficient reduction of chloramines. This enhanced catalytic functionality has FIVE times more capacity for chloramines reduction than standard carbon blocks.

All components and materials are made with FDA approved materials, and Manufactured from NSF 61 Certified Coconut Shell carbon, and are California Prop 65 Compliant. Each filter comes with a unique handle designed top cap for lightweight and easy removal, a bag for proper disposal, and a double o-ring bottom connection into the **Cartridge Tank<sup>®</sup>** plumbing adapter for the 2½" assembly and full 1¼" PVC glue socket flow rate connections.

### Available in three filter configurations:

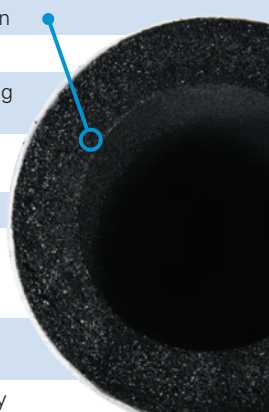
**CT-03-CB:** 3 Micron Carbon Block, High Capacity

**CT-20-CB:** 20 Micron Carbon Block, High Porosity/  
Low Pressure Drop

**CT-03-CB-AMINE:** 3 Micron Carbon Block,  
Chloramine Reduction

### Features

- High-performance carbon
- Unique binder system
- Proprietary manufacturing process
- Outer Wrap of Polypropylene
- Netting of Polyethylene



### Benefits

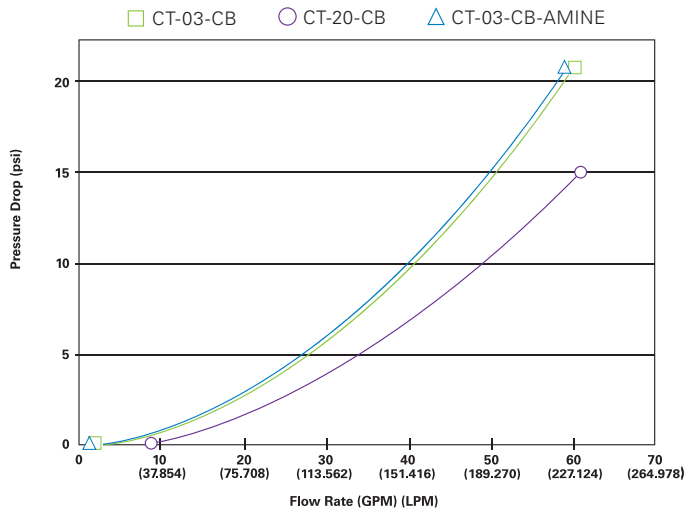
- Exceptionally low pressure drop
- High dirt holding capacity
- Excellent contaminant reductions

### Applications

- Ideal for Residential, Food Service, Commercial and Industrial applications
- Effective at reducing unwanted bad taste and odor, along with chlorine and chloramine taste and odor from potable drinking water
- Ideal as polishing or pre-filters in applications requiring fine filtration and high capacity



### Filter Performance



### Blue Series Configuration

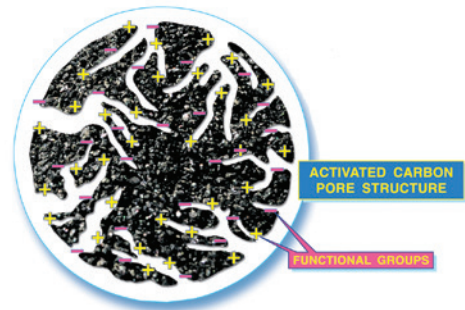
<p>Item #: CT-1/4NPTLID</p>  <p>Top Cap option with pressure release Valve &amp; Removal Handles</p>	<p>Item #: CT-2.5LID</p>  <p>2.5" Threaded top/bottom Res./LC Cap threaded connection.</p>
<p>Item #: CT-RETAININGRING</p>  <p>Snap Ring with I.D. Tag connection.</p>	<p>Item #: CT-2.5DRAIN CT-2.5ADAPTER</p>  <p>2.5" Bottom Drain Plumbing for Res./LC Filters.</p>

### Better Filtration - There's No Competition

**Nominal 3 micron (CT-03-CB) rated filter** to treat >250,000 gallons (946,353 Liters) of water @ 15 gpm (56.78 LPM) with greater than 90% reduction, estimated capacity using 2ppm of free chlorine.

**Nominal 20 micron (CT-20-CB) rated filter** to treat >150,000 gallons (567,812 Liters) of water @ 7 gpm (26.50 LPM) with greater than 90% reduction, estimated capacity using 2ppm of free chlorine.

**Nominal 3 micron Chloramine (CT-03-CB-AMINE) rated filter** to treat >50,000 gallons (189,271 Liters) of water @ 7 gpm (26.50 LPM) with greater than 85% reduction, estimated capacity.



### Easy Replacements - No Tools Means No Tools

PRESS THE RED PRESSURE RELIEF VALVE & PULL SNAP-RING



LIFT TOP CAP



Performance claims are based on independent lab results and manufacturer's internal test data. Actual performance is dependent on influent water quality, flow rates, system design and applications. Your results may vary. Micron ratings based on 85% or greater removal of a given particle size. Estimated capacity using 2ppm free chlorine with greater than 90% reduction. Flush new cartridges until water runs clear prior to use. Do not use with water that is microbiologically unsafe or of unknown quality without adequate disinfection before or after the system.



For more information, visit [enpress.com](http://enpress.com) or [oneFiltration.com](http://oneFiltration.com)

The Yellow Filtration Series are dual gradient double pleated filtration solutions for extended life and use, with filtration levels of 5 and 20 microns. This Series offers a combination filter composed of an outer layer of Polypropylene String with a Melt blown Polypropylene core. The precise wound pattern provides greater surface area, higher dirt-loading capacity and greater efficiency than standard wound filter cartridges. As a dual media filter, they provide a cost effective, extended-life product capable of capturing a broad range of particulates with high service flow rates greater than 30+gpm with less than 15 Delta P.



## Yellow Filtration Series

The large diameter pre-filter reduces particulate loading on the post filter allowing it to perform at higher velocities, capturing fine sediment, sand, silt, rust and scale particles of 50 or 20 microns. This equates to higher particulate reduction and added loading capacity.

The Meltblown core captures 20 or 5 micron particles, (depending on the filter configuration), this dual combination filter extends the life of the inner-cartridge by eliminating premature caking and prevents down stream media migration common in string cartridges.

Each filter comes with a unique handle designed top cap for lightweight and easy removal, a bag for proper disposal, and a double o-ring bottom connection into the **Cartridge Tank**<sup>®</sup> plumbing adapter for the 2½" assembly and full 1¼" PVC glue socket flow rate connections.

### Available in two filter configurations:

**CT-2005-SWMB:** External 20 Micron String Wound pre-filter, with 5 Micron Meltblown Core

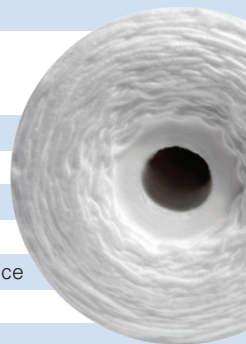
**CT-5020-SWMB:** External 50 Micron String Wound pre-filter, with 20 Micron Meltblown Core

### Features

- Outer pre-filter manufactured using 100% polypropylene yarn
- Precision pattern captures 20 or 50 microns or larger
- Extends service life of inner filter
- Outer filter captures fine sediment, sand, silt, rust and scale particles
- Melt blown inner filter manufactured using thermally bonded polypropylene fibers
- Minimal pressure drop
- Consistent downstream flow w/out fiber migration

### Benefits

- Microorganism resistant
- NSF component
- Nominally rated as stated
- High purity
- Excellent chemical resistance
- High dirt holding capacity
- Graded density

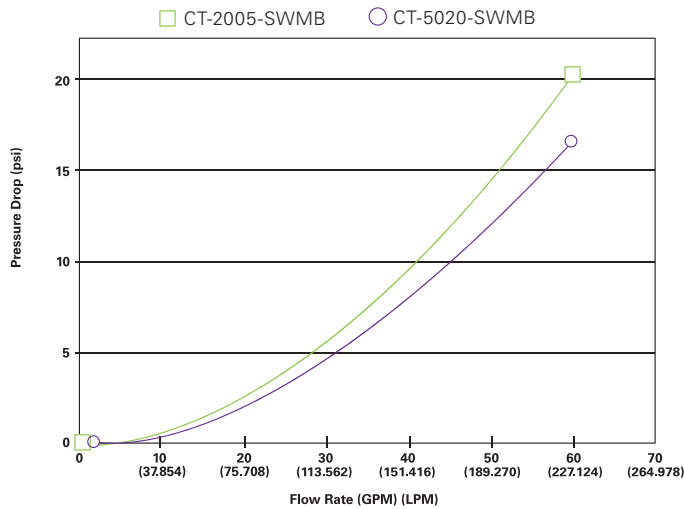


### Applications

Potable water	Food/beverage
Pre RO	Fine chemicals
Electronics	Metal finishing
Plating solutions	Oxidizing agents
Corrosive fluids	Gases
Concentrated acids and alkali	



### Filter Performance



### Yellow Series Configuration

<p>Item #: CT-1/4NPTLID</p>  <p>Top Cap option with pressure release Valve &amp; Removal Handles</p>	<p>Item #: CT-2.5LID</p>  <p>2.5" Threaded top/bottom Res./LC Cap threaded connection.</p>
<p>Item #: CT-RETAININGRING</p>  <p>Snap Ring with I.D. Tag connection.</p>	<p>Item #: CT-2.5DRAIN CT-2.5ADAPTER</p>  <p>2.5" Bottom Drain Plumbing for Res./LC Filters.</p>

### Better Filtration - There's No Competition

**Extended service life:** 6, 12, 18, or 24 months versus 1-3 months, with 3x media content and 2x surface area to less efficient options!

**2x Surface area:** Wound in a precise pattern, providing greater surface area, higher dirt-loading capacity, and greater efficiency than that of a standard wound cartridge. The precise pattern offers 30-50% improved efficiency. ENPRESS surface area: = 566.46 sq. inches. Standard 4.5x20 = 283.23 sq. inches. = Two times the surface area.

**3x Media Content:** Both the ENPRESS 50x20 & 20x5 filters have a finished medium weight of 9 pounds, with a yarn content of 7.75 pounds. A standard 4.5x20 cartridge has a medium string weight of 2.5 pounds = Three times the media content.

### Easy Replacements - No Tools Means No Tools

PRESS THE RED PRESSURE RELIEF VALVE & PULL SNAP-RING



LIFT TOP CAP



Performance claims are based on independent lab results and manufacturer's internal test data. Actual performance is dependent on influent water quality, flow rates, system design and applications. Your results may vary. Micron ratings based on 85% or greater removal of a given particle size. Flush new cartridges until water runs clear prior to use. Do not use with water that is microbiologically unsafe or of unknown quality without adequate disinfection before or after the system.

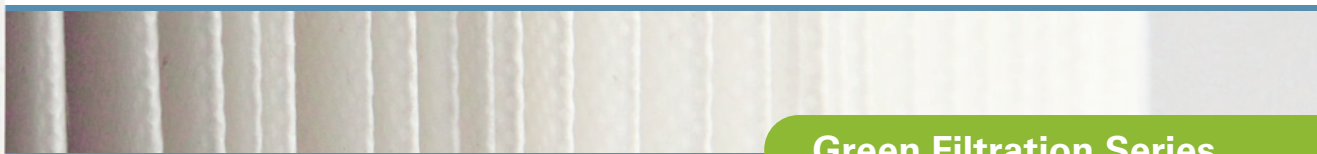


For more information, visit [enpress.com](http://enpress.com) or [oneFiltration.com](http://oneFiltration.com)

# CARTRIDGE TANK® FILTRATION SYSTEM

The Green Filtration Series are electropositively charged dual gradient double pleated filtration solutions that successfully remove contaminants from 1 to 0.2 microns, featuring ENPRESS NanoAI™ media. The filters are designed with a larger 20 micron pre-filtration layer externally and the charged media internally, extending filtration level contamination and service life, while achieving high flow and low pressure drop.

The filters will outperform competitive filtration solutions in all turbidity applications including insoluble scale, Fe<sub>3</sub>, bacterial iron slime, colloidal solids, silt, rust, and other particle filtration, resulting in higher water quality and longer life of the filtration system.



## Green Filtration Series

The Green Series of pleated filters features a thermally bonded blend of micro-glass fibers & cellulose, infused with nanoalumina fibers in a non-woven matrix that creates an electropositively charged depth filter media. When assembled into a pleated cartridge, our solution offers a unique combination of efficiency, capacity, flow rate, & low pressure drop that allow this nonwoven media to filter like a NF polymeric membrane, at levels unmatched in today's filtration marketplace. All filters feature the use of Agion® antimicrobial technology that provides built-in protection by working 24/7 resisting the growth of microbes.

Each filter comes with a unique handle designed top cap for lightweight and easy removal, a bag for proper disposal, and a double o-ring bottom connection into the **Cartridge Tank®** plumbing adapter for the 2½" assembly and full 1¼" PVC glue socket flow rate connections.

### Available in two filter configurations:

**CT-20xNanoAI™ -AG:** External 20 Micron Pleated pre-filter, with NanoAI™ Pleated Inner Filter w/ Agion® Biostat

**CT-20xNanoAI™ -PAC-AG:** External 20 Micron Pleated pre-filter, with NanoAI™ PAC Pleated Inner Filter w/Agion® Biostat and Carbon Block Core



is a trademark of Sciescent LLC, Wakefield, MA, USA

## Features

- Dual Gradient Double Pleated Filters with electropositively charged NanoAI™ media
- Double Buna-N O-ring seals
- Filter Belly Bands
- PAC solution option
- Agion® antimicrobial technology

## Benefits

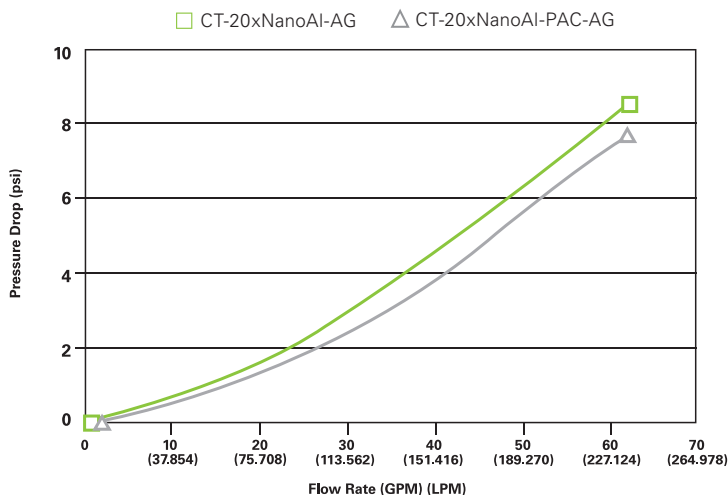
- Successfully remove contaminants from 1 to 0.2 microns
- Over traditional filtration include finer particle retention, higher flow rate and loading capacity, and lower pressure drop
- Ensures no bypass of contaminants and high chemical compatibility
- Prevent collapsing of filters under high flow or contaminant load applications
- Effective at reducing unwanted bad taste and odor from potable drinking water
- Provides built-in protection by working 24/7 resisting the growth of microbes

## Applications

- Primary Filtration in lieu of microporous membranes
- Make Up Water (particulate, microbial control)
- Polishing Filters (carbon fines, emulsified oil removal)
- RO Prefiltration (SDI reduction)
- Process Water (turbidity, particulate, colloidal suspensions)
- Waste Water (biologicals, proteins, dyes)
- Cooling Towers, Chill Water Loops (iron removal)



## Filter Performance



## Green Series Configuration

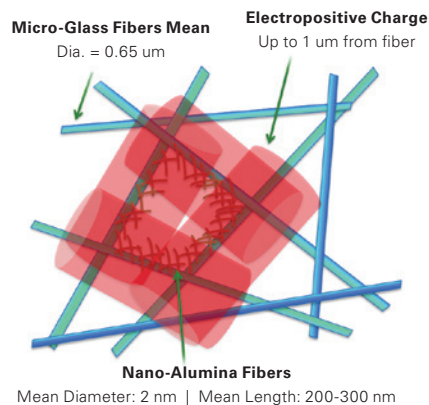
<p>Item #: CT-1/4NPTLID</p> <p>Top Cap option with pressure release Valve &amp; Removal Handles</p>	<p>Item #: CT-2.5LID</p> <p>2.5" Threaded top/bottom Res./LC Cap threaded connection.</p>
<p>Item #: CT-RETAININGRING</p> <p>Snap Ring with I.D. Tag connection.</p>	<p>Item #: CT-2.5DRAIN CT-2.5ADAPTER</p> <p>2.5" Bottom Drain Plumbing for Res./LC Filters.</p>

## Better Filtration - There's No Competition

**Known foulants for RO membranes** that are reduced by this adsorptive technology: Virus, bacteria, colloids (Iron, Manganese, Silica, etc), Cellular debris is also reduced: Lipids (hydrophobic and hydrophylic), Phospholipid, Proteins, Carbohydrates, and Glucose – mono and poly saccharides (TEP/EPS)

**Data suggests adsorptive filter media** could represent a significant improvement to membrane performance, life and overall operating cost by reducing fouling.

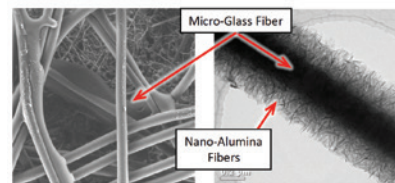
**Additional filtration highlights include:** Removal of Humic Acid based tannins; 3-4 log reduction, cyst removal; Endotoxin removal; Selected Heavy Metal Removal: Fe<sub>2</sub>, Fe<sub>3</sub>, Sn, Cu, Cr<sub>3</sub>, Al; Reduces Membrane fouling; Pre-, Post-, and Stand-Alone Filtration Solution



## Easy Replacements - No Tools Means No Tools



## Filter Close-up



Performance claims are based on independent lab results and manufacturer's internal test data. Actual performance is dependent on influent water quality, flow rates, system design and applications. Your results may vary. Micron ratings based on 85% or greater removal of a given particle size. Estimated capacity using 2ppm free chlorine with greater than 90% reduction. Flush new cartridges until water runs clear prior to use. Do not use with water that is microbiologically unsafe or of unknown quality without adequate disinfection before or after the system.



For more information, visit [enpress.com](http://enpress.com) or [oneFiltration.com](http://oneFiltration.com)



The Orange Filtration Series are dual gradient double pleated filtration solutions for extended life and use, with filtration levels of 5, 10 and 20 microns. The filters are designed with a larger pre-filtration layer externally and the smaller internally, extending filtration level contamination and service life, while achieving high flow and low pressure drop.



## Orange Filtration Series

The filters will outperform competitive filtration solutions in all turbidity applications including silt, rust, and other particle filtration. The Orange Series also provides lower shear water velocity as the raw water passes through the filter, allowing for more contact time and interaction with the extensive surface area of the filters. This results in higher water quality and longer life of the filtration system.

Each filter comes with a unique handle designed top cap for lightweight and easy removal, a bag for proper disposal, and a double o-ring bottom connection into the **Cartridge Tank<sup>®</sup>** plumbing adapter for the 2½" assembly and full 1¼" PVC glue socket flow rate connections.

### Available in three filter configurations:

**CT-10x5:** External 10 Micron Pleated pre-filter, with 5 Micron Pleated Internal Filter

**CT-20x10:** External 20 Micron Pleated pre-filter, with 10 Micron Pleated Internal Filter

**CT-50x20:** External 50 Micron Pleated pre-filter, with 20 Micron Pleated Internal Filter

## Features

- Dual Gradient Double Pleated Filters
- Double Buna-N O-ring seals
- Filter Belly Bands
- Durable Polyester filter and Polypropylene cap construction

## Benefits

- Extended service life, contaminant removal, and dirt holding capacity
- Low pressure drop = high flow!
- Ensures no bypass of contaminants and high chemical compatibility
- Prevent collapsing of filters under high flow or contaminant load applications
- Bacteria and chemical resistant

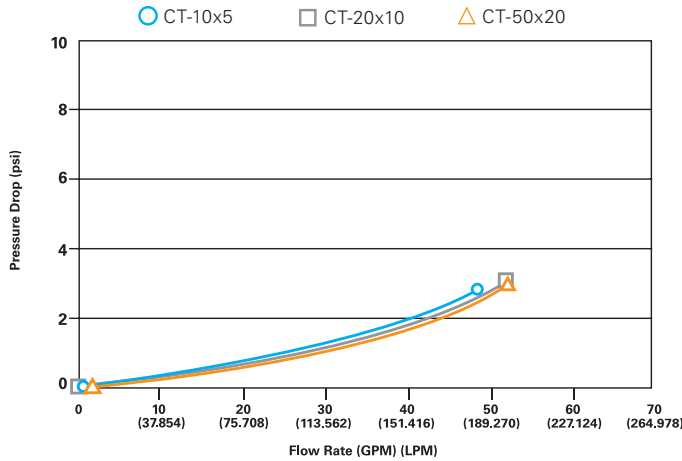
## Applications

- Ideal for Residential, Food Service, Rental Fleets, Commercial and Industrial Applications
- Make-up Water, RO Pre-filtration, Cooling Towers, Chill Water Loops, Metal Finishing
- Process Water (turbidity, particulate, colloidal suspensions)
- Reduction in frequency of replacing common 2 ½" or 4 ½" housings...Bigger is Better!
- Other water-based fluid solutions



OR

### Filter Performance



### Orange Series Configuration

Item #: CT-1/4NPTLID



Top Cap option with pressure release Valve & Removal Handles

Item #: CT-2.5LID



2.5" Threaded top/bottom Res./LC Cap threaded connection.

Item #: CT-RETAININGRING



Snap Ring with I.D. Tag connection.

Item #: CT-2.5DRAIN CT-2.5ADAPTER



2.5" Bottom Drain Plumbing for Res./LC Filters.

### Better Filtration - There's No Competition

**Extended Service Life...6, 12, 18, or 24 months, versus 1-3?:** The total surface area of the dual gradient Orange Series is approximately 100 ft<sup>2</sup>, as compared to a typical single layer 2 1/2"x20 filter, is approximately 7ft<sup>2</sup> of filter media area, and a 4 1/2"x20 is approximately 16ft<sup>2</sup>. We have nearly 6.5x open area compared to standard 4.5x20 filters...100ft<sup>2</sup> vs. 16ft<sup>2</sup> and nearly 14.5x open area compared to standard 2.5x20filters...100ft<sup>2</sup> vs. 7ft<sup>2</sup>. Extended Service Life!

### Easy Replacements - No Tools Means No Tools

PRESS THE RED PRESSURE RELIEF VALVE & PULL SNAP-RING



LIFT TOP CAP



Performance claims are based on independent lab results and manufacturer's internal test data. Actual performance is dependent on influent water quality, flow rates, system design and applications. Your results may vary. Micron ratings based on 85% or greater removal of a given particle size. Flush new cartridges until water runs clear prior to use. Do not use with water that is microbiologically unsafe or of unknown quality without adequate disinfection before or after the system.



For more information, visit [enpress.com](http://enpress.com) or [oneFiltration.com](http://oneFiltration.com)



# CARTRIDGE TANK<sup>®</sup> FILTRATION SYSTEM

The White Filtration Series is a unique and high capacity granular media bottle that allows incorporation of multiple media options and solutions to be used with the series. This filter series is a 0.5 ft<sup>3</sup> empty bottle for filling of granular filtration media. This ONE - Water Filtration Simplified™ filter series is ideal for a wide range of Residential, Food Service, Commercial, and Industrial applications, and can be used for multiple applications from Service DI, POE for city or well-water installations, Rental Programs, Exchange systems, high-purity pre- or post-filtration applications, etc...the options, configurations, and solutions are endless.



The design also incorporates the patented Vortech<sup>®</sup> full distributor plate technology, providing uniform distribution and utilization of the media bed along with maximum efficiencies and service flow rates, giving system design maximum flexibility whether installed in up-flow or down-flow service. A removable Top Cap has a locking feature that can be used for limiting access to the internal medias by the end-user, and special Rings on the bottom of the bottle allow for ease of hanging of the cartridge for easy change-out of medias in applications like Service DI Exchange.

The White Series is also available in a Mid-Vortech<sup>®</sup> configuration that splits the cartridge chambers equally, to 0.25 ft<sup>3</sup> per chamber, for separation and use of different medias of which increases the efficiency and usage of the media bed.

Each filter comes with a unique handle designed top cap for lightweight and easy removal, and a double o-ring bottom connection into the **Cartridge Tank<sup>®</sup>** plumbing adapter for the 2 ½" assembly and full 1" PVC glue socket flow rate connections.

#### Available in two filter configurations:

**CT-MEDIA05** – Full 0.5 ft<sup>3</sup> configuration, able to be filled with any media for up-flow or down-flow service due to use of Vortech<sup>®</sup> technology.

**CT-MEDIA05-MID** – Full 0.5 ft<sup>3</sup> configuration with Mid-Vortech<sup>®</sup> separation plate, able to be filled with any media for up-flow or down-flow service, due to use of Vortech<sup>®</sup> technology.

## White Filtration Series

### Features

- 0.5 cuft empty media bottle
- Polyethylene construction
- Vortech<sup>®</sup> distributor plate
- Locking or Removable top cap
- Rings on bottom of bottle
- Double Buna-N O-ring seals
- Mid-Vortech<sup>®</sup> distributor plate option

### Benefits

- Extended service life and high capacity contaminant removal
- High chemical resistance
- Low pressure drop=high flow!
- Up-flow or down-flow service and full utilization of the media bed
- Ease of handling
- Ensures no bypass of contaminants and high chemical compatibility
- Separation of multi-media configurations.

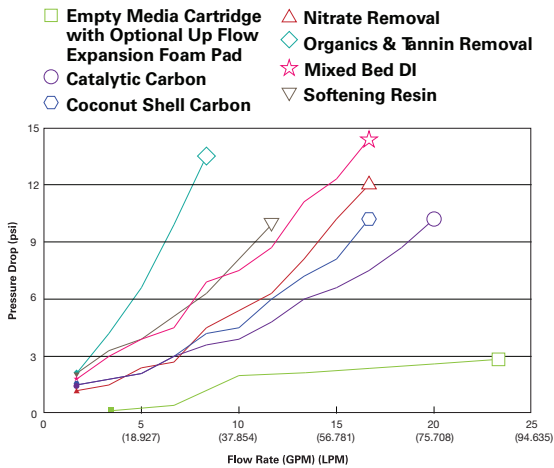
### Applications

- Ideal for Residential, Food/Beverage Service, Rental Fleets, Service DI Exchange, Plating solutions, Commercial and Industrial Applications
- Metal finishing, Oxidizing agents, Corrosive fluids, Electronics, Pre-RO, Process Water, Waste Water, Cooling Towers, Make-up Water, Polishing Filters, Primary Filtration
- Effective at reducing unwanted bad taste and odor, along with chlorine and chloramine taste and odor from potable drinking water

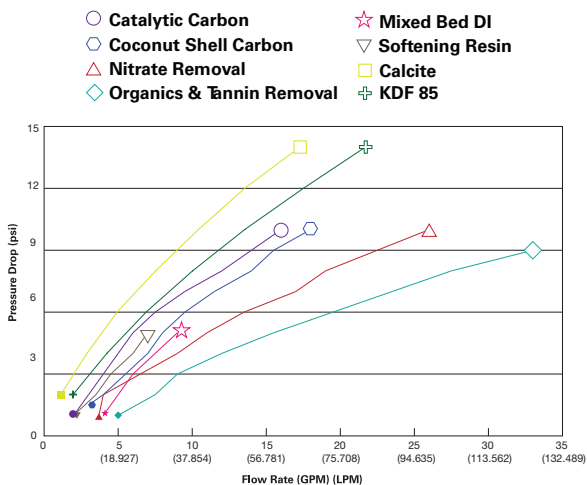


## Filter Performance

### Up Flow



### Down Flow



## White Series Configuration

Item #: CT-1/4NPTLID



Top Cap option with pressure release Valve & Removal Handles

Item #: CT-2.5LID



2.5" Threaded top/bottom Res./LC Cap threaded connection.

Item #: CT-RETAININGRING



Snap Ring with I.D. Tag connection.

Item #: CT-2.5DRAIN  
CT-2.5ADAPTER



2.5" Bottom Drain Plumbing for Res./LC Filters.

## Better Filtration There's No Competition

**Optional CT-MEDIA05-FOAM** – Optional up-flow expansion foam pad can be added to filters used in up-flow service applications to promote consistent service flow rates and reduced pressure drop.

**Optional CT-MEDIA05-SHIP** – Optional Box and Bag Kit solution for shipping of spent cartridges to facilities for regeneration or reuse of bottle.

## Easy Replacements - No Tools Means No Tools

PRESS THE RED PRESSURE RELIEF VALVE & PULL SNAP-RING



LIFT TOP CAP



Performance claims are based on independent lab results and manufacturer's internal test data. Actual performance is dependent on influent water quality, flow rates, system design and applications. Your results may vary. Flush new cartridges until water runs clear prior to use. Do not use with water that is microbiologically unsafe or of unknown quality without adequate disinfection before or after the system.



For more information, visit [enpress.com](http://enpress.com) or [oneFiltration.com](http://oneFiltration.com)



# CARTRIDGE TANK<sup>®</sup> FILTRATION SYSTEM

The Purple Filtration Series are high flow rate meltblown polypropylene filtration solutions for extended life and use, with filtration levels of 5 and 20 microns. The filters are designed with a large surface area depth filtration design, extending filtration level contamination and service life, while achieving high flow rates up to 100 GPM (380 LPM) and low pressure drop.

The filters will outperform competitive filtration solutions in all turbidity applications including silt, rust, and other soft particle filtration. The Purple Series also provides

lower shear water velocity as the raw water passes through the filter, allowing for more contact time and interaction with the extensive surface area of the filters. This results in higher water quality and longer life of the filtration system.

A direct replacement for expensive stainless steel housings used in commercial RO pre-filtration, Process Water, Cooling Towers, and other Commercial and Industrial applications, and exclusively designed for the Cartridge Tank<sup>®</sup>, these filters have significant surface area, low pressure drop, and high flow rate capabilities.

The filters are ideal as polishing or pre-filters in applications requiring fine filtration and high capacity. Utilizing 100% polypropylene media, these are the commercial filtration solutions of the future!

Each filter comes with a unique handle designed top cap for lightweight and easy removal, a bag for proper disposal, and a double o-ring connection. All components and materials are manufactured from NSF 61 and FDA Certified materials.

#### Available in two filter configurations:

**CT-COMM05-MB** – 5 Micron Meltblown PP Depth

**CT-COMM20-MB** – 20 Micron Meltblown PP Depth

## Purple Filtration Series

### Features

- Durable and chemical resistant
- Polypropylene filter and cap construction
- Double EPDM O-ring seals
- Unique filter handle design

### Benefits

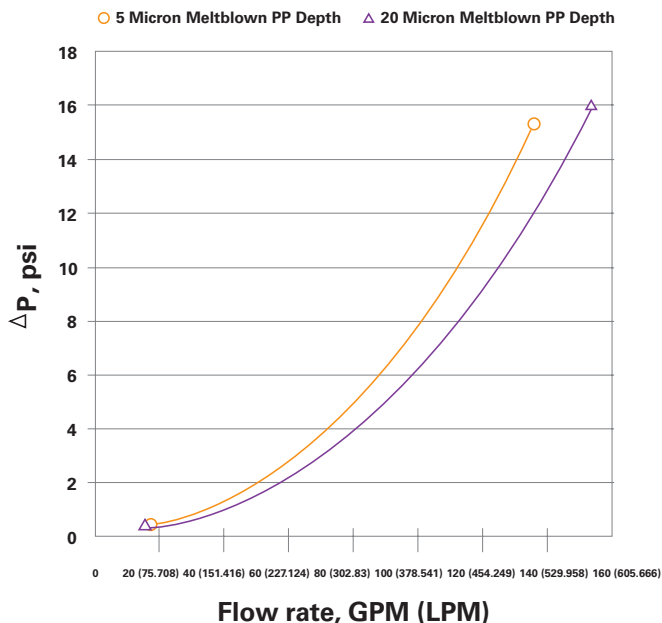
- Extended service life, contaminant removal, and dirt holding capacity
- Low pressure drop = high flow!
- Insures no bypass of contaminants and high chemical compatibility
- Prevent collapsing of filters under high flow or contaminant load applications
- Bacteria and chemical resistant
- Ease of filter removal from housing

### Applications

- Ideal for Residential, Food Service, Rental Fleets, Commercial and Industrial Applications
- Make-up Water, RO Pre-filtration, Cooling Towers, Chill Water Loops, Metal Finishing
- Process Water (turbidity, particulate, colloidal suspensions)
- Community Water, Livestock, or Poultry, Water Systems
- Replacement of bag filters with more surface area and capacity
- Other water-based fluid solutions



### Filter Performance



### Purple Series Configuration

Item #: CT-1/4NPTLID



Top Cap option with pressure release Valve & Removal Handles

Item #: CT-4.5LID



4.5" Threaded top/bottom Commercial Cap threaded connection.

Item #: CT-RETAININGRING



Snap Ring with I.D. Tag connection.

Item #: CT-4.5DRAIN CT-4.5ADAPTER



4.5" Bottom Drain Plumbing for Commercial Filters.

### Better Filtration - There's No Competition

**Maximum pressure differential of 30 psi.**

**Maximum flow rate of all other configurations of 100 GPM (380 LPM)**

### Easy Replacements - No Tools Means No Tools

PRESS THE RED PRESSURE RELIEF VALVE & PULL SNAP-RING



LIFT TOP CAP



Performance claims are based on independent lab results and manufacturer's internal test data. Actual performance is dependent on influent water quality, flow rates, system design and applications. Your results may vary. Micron ratings based on 85% or greater removal of a given particle size. Flush new cartridges until water runs clear prior to use. Do not use with water that is microbiologically unsafe or of unknown quality without adequate disinfection before or after the system.



For more information, visit [enpress.com](http://enpress.com) or [oneFiltration.com](http://oneFiltration.com)

# CARTRIDGE TANK<sup>®</sup> FILTRATION SYSTEM

The Red Filtration Series are high flow rate pleated filtration solutions for extended life and use, with filtration levels of 1 Absolute, 5, 20, 50, and 150 microns, along with an activated carbon (PAC) solution as well. The filters are designed with a large filtration layer, extending filtration level contamination and service life, while achieving high flow rates up to 150 GPM (568 LPM) and low pressure drop.

The filters will outperform competitive filtration solutions in all turbidity applications including silt, rust, and other particle filtration. The Red Series also provides lower shear

water velocity as the raw water passes through the filter, allowing for more contact time and interaction with the extensive surface area of the filters. This results in higher water quality and longer life of the filtration system.

A direct replacement for expensive stainless steel housings used in commercial RO pre-filtration, ProcessWater, Cooling Towers, and other Commercial and Industrial applications, and exclusively designed for the Cartridge Tank<sup>®</sup>, these filters have significant surface area, low pressure drop, and high flow rate capabilities. The filters are ideal as polishing or pre-filters in applications requiring fine filtration and high capacity. Utilizing 100% cellulose free media and cleanable from 5 micron and up, these are the commercial filtration solutions of the future!

Each filter comes with a unique handle designed top cap for lightweight and easy removal, a bag for proper disposal, and a double o-ring connection. All components and materials are manufactured from NSF 61 and FDA Certified materials.

#### Available in two filter configurations:

**CT-COMM1A** – 1 Micron Absolute Pleated PP

**CT-COMM05** – 5 Micron PP Pleated

**CT-COMM20** – 20 Micron PP Pleated

**CT-COMM50** – 50 Micron PP Pleated

**CT-COMM150** – 150 Micron PP Pleated

**CT-COMM-CARB** – Pleated Activated Carbon

## Red Filtration Series

### Features

- Durable and chemical resistant
- Polypropylene filter and cap construction
- Double EPDM O-ring seals
- Filter Belly Bands
- Unique filter handle design

### Benefits

- Extended service life, contaminant removal, and dirt holding capacity
- Low pressure drop = high flow!
- Insures no bypass of contaminants and high chemical compatibility
- Prevent collapsing of filters under high flow or contaminant load applications
- Bacteria and chemical resistant
- Ease of filter removal from housing

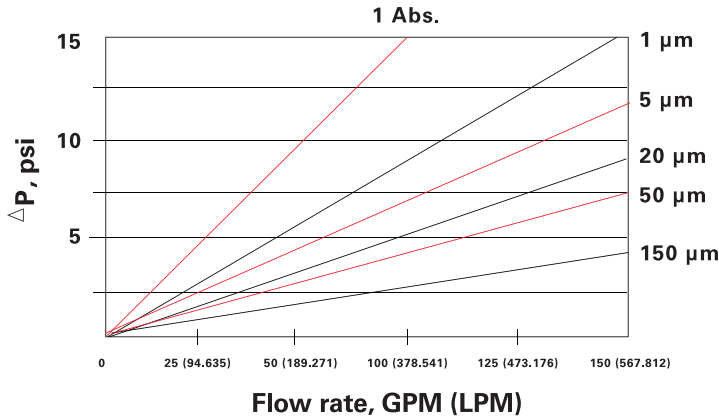
### Applications

- Ideal for Residential, Food Service, Rental Fleets, Commercial and Industrial Applications
- Make-up Water, RO Pre-filtration, Cooling Towers, Chill Water Loops, Metal Finishing
- Process Water (turbidity, particulate, colloidal suspensions)
- Community Water, Livestock, or Poultry, Water Systems
- Replacement of bag filters with more surface area and capacity
- Other water-based fluid solutions



## Filter Performance

Low Pressure Drop ONE™ filters are designed to minimize pressure drop by using 2" pipe fittings and large diameter center tubes. (see chart for pressure drop data using pleated cartridges) LPM).



## Red Series Configuration

Item #: CT-1/4NPTLID



Top Cap option with pressure release Valve & Removal Handles

Item #: CT-4.5LID



4.5" Threaded top/bottom Commercial Cap threaded connection.

Item #: CT-RETAININGRING



Snap Ring with I.D. Tag connection.

Item #: CT-4.5DRAIN  
CT-4.5ADAPTER



4.5" Bottom Drain Plumbing for Commercial Filters.

## Better Filtration - There's No Competition

**Activated carbon (PAC)** filter for a service flow rate up to 15GPM (57 LPM) with a removal capacity up to 150,000 gallons, with a 90% chlorine reduction...improving taste, odor, sediment, and chlorine.

**Maximum pressure differential of 40 psi.**

**Maximum flow rate of 1 Micron Absolute of 50 GPM (190 LPM).**

**Maximum flow rate of all other configurations of 150 GPM (568 LPM)**

## Easy Replacements - No Tools Means No Tools

PRESS THE RED PRESSURE RELIEF VALVE & PULL SNAP-RING



LIFT TOP CAP



Performance claims are based on independent lab results and manufacturer's internal test data. Actual performance is dependent on influent water quality, flow rates, system design and applications. Your results may vary. Micron ratings based on 85% or greater removal of a given particle size. Flush new cartridges until water runs clear prior to use. Do not use with water that is microbiologically unsafe or of unknown quality without adequate disinfection before or after the system.



For more information, visit [enpress.com](http://enpress.com) or [oneFiltration.com](http://oneFiltration.com)